

# Soar into a remarkable retirement

## Getting where you want to go starts with understanding where you are.

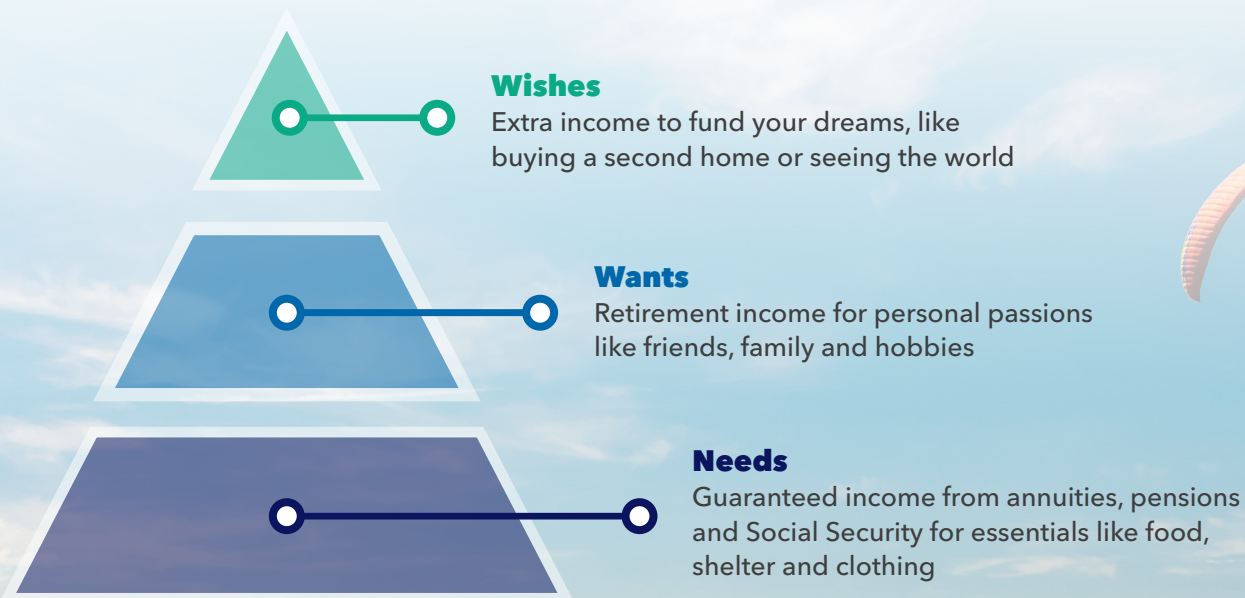
Together with your financial professional, think carefully about what you'll need, want and wish for in this next, most important chapter in your life. Then use this worksheet to take inventory of your income, your savings and the expenses you expect to have after you stop working.

Remember, your worksheet is a snapshot of where you stand today. Review and update it regularly. The world turns, and things change.

### Step 1: Take time to plan

A remarkable retirement begins with paying the bills, but there's much more. To soar means living life to its fullest. How much will you need to make that happen?

Think about a mountain. From the top, you can soar to the retirement of your dreams. But to get there, you need money to finance your needs, your wants and your wishes. Look at it this way.



**INVESTMENT AND INSURANCE PRODUCTS ARE:**  
• NOT INSURED BY THE FDIC OR ANY FEDERAL GOVERNMENT AGENCY • NOT A DEPOSIT OR OTHER OBLIGATION OF, OR GUARANTEED BY, THE BANK OR ANY BANK AFFILIATE • SUBJECT TO INVESTMENT RISKS, INCLUDING POSSIBLE LOSS OF THE PRINCIPAL AMOUNT INVESTED

## Step 2: Identify your income

Now, it's time to run the numbers. Start by listing the sources of income you expect to have in retirement.

Income Sources	Estimated Monthly Amount	OR Current Balance
<b>Guaranteed</b>		
Social Security		
Pension plan		
Annuities		
<b>Expected</b>		
Employer-sponsored retirement savings plans (401(k), 403(b), SEPs, etc.)		
Traditional IRAs, rollover IRAs, Roth IRAs		
Taxable mutual funds, individual securities		
Annuities held for savings		
CDs		
Savings, checking		
Work in retirement		
Other		
<b>(A) Total</b>		

## Step 3: Estimate your expenses

Calculate how much it will cost to fund your remarkable retirement.

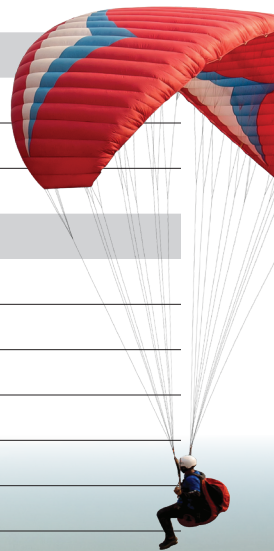
To get you started, here's an average annual amount spent by Americans aged 65+ on some basic needs.

**Housing:** \$20,362\* • **Food:** \$7,306\* • **Healthcare:** \$7,540\* • **Entertainment:** \$2,672\* • **Hobbies, toys and pets:** \$712\*

Needs	Monthly Estimate	Notes
<b>Housing</b>		
Mortgage, rent		
Maintenance and fees		
Homeowners/renters insurance		
Services (lawn care, cleaning)		
<b>Food</b>		
Groceries		
Dining out		
<b>Utilities</b>		
Gas and electric		
Water		
Trash collection		
Cable/streaming		
<b>Healthcare</b>		
Health insurance		
Life, long-term care, disability insurance		
Dental, hearing and vision insurance		
Out-of-pocket expenses		

Needs	Monthly Estimate	Notes
<b>Transportation</b>		
Automobiles		
Insurance		
Public transportation		
<b>Taxes</b>		
Property		
Income and capital gains		
Sales		
<b>Personal</b>		
Clothing		
Personal care		
Pet care		
<b>Just in case</b>		
Parent care		
Boomerang children		
Uninsured losses		
Medical emergencies		
<b>Other</b>		

Wants	Annual Estimate	Notes
<b>Family</b>		
Visiting children and grandchildren		
Education funding		
Vacations		
<b>Charitable Giving</b>		
Large donations		
Establish a trust		
<b>Memberships and Miscellaneous</b>		
Country club		
Fitness center		
Sports equipment		



Wishes	Estimate	Notes
Move to another city, state, or country		
Buy a second home		
Tour the country		
<b>(B) Total Needs, Wants and Wishes</b>		

Estimated difference		
Total expected monthly income	(A)	
Total expected monthly expenses	-(B)	
Net		

### Need help closing a gap?

Talk to your financial professional about options to help ensure your income lasts throughout retirement.

### What's next?

Take your completed worksheet to your financial professional. Use it to map out a retirement plan that can take you where you want to go.



 *Basta Executive Services, LLC.*

---

**LABIB "LOUIE" BASTA**  
*Sr. Financial, Insurance, Benefits,  
 Health & Wealth Consultant*

*Helping People Protect their:  
 Benefits  
 Businesses  
 Families  
 Health  
 and  
 Wealth*

*Cell: (214) 499-8982  
 E-mail: [labib@bastacompany.us](mailto:labib@bastacompany.us)*

***"Ask me how I can help YOU make MORE MONEY"***

\*Bureau of Labor Statistics, Table 1300, Consumer Expenditure Survey, 2022.

<https://www.bls.gov/cex/tables/calendar-year/mean-item-share-average-standard-error/reference-person-age-ranges-2022.pdf>

This material is provided by Athene Annuity and Life Company (61689) headquartered in West Des Moines, Iowa, which issues annuities in 49 states (excluding NY) and in D.C., and Athene Annuity & Life Assurance Company of New York (68039) headquartered in Pearl River, New York, which issues annuities in New York.

The term "financial professional" is not intended to imply engagement in an advisory business with compensation unrelated to sales. Financial professionals will be paid a commission on the sale of an Athene annuity.